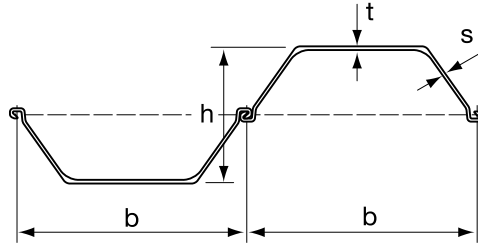


AU/PU/PU-R/GU

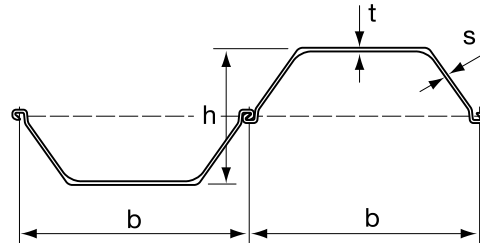
AU/PU/PU-R/GU Steel Sheet Piles



SECTION	Width (b) mm	Height (h) mm	THICKNESS		Cross Sectional Area cm ² /m	WEIGHT		Section Modulus cm ³ /m	Moment of Inertia cm ⁴ /m
			Flange (s) mm	Web (t) mm		Pile kg/m	Wall kg/m ²		
AU 14	750	408	10.0	8.3	132	77.9	104	1405	28680
AU 16	750	411	11.5	9.3	147	86.3	115	1600	32850
AU 17	750	412	12.0	9.7	151	89.0	119	1665	34270
AU 18	750	441	10.5	9.1	150	88.5	118	1780	39300
AU 20	750	444	12.0	10.0	165	96.9	129	2000	44440
AU 21	750	445	12.5	10.3	169	99.7	133	2075	46180
AU 23	750	447	13.0	9.5	173	102.1	136	2270	50700
AU 25	750	450	14.5	10.2	188	110.4	147	2500	56240
AU 26	750	451	15.0	10.5	192	113.2	151	2580	58140
PU 12	600	360	9.8	9.0	140	66.1	110	1200	21600
PU 12 10/10	600	360	10.0	10.0	148	69.6	116	1255	22580
PU 18 ⁻¹	600	430	10.2	8.4	154	72.6	121	1670	35950
PU 18	600	430	11.2	9.0	163	76.9	128	1800	38650
PU 22 ⁻¹	600	450	11.1	9.0	174	81.9	137	2060	46380
PU 22	600	450	12.1	9.5	183	86.1	144	2200	49460
PU 28 ⁻¹	600	452	14.2	9.7	207	97.4	162	2680	60580
PU 28	600	454	15.2	10.1	216	101.8	170	2840	64460
PU 32	600	452	19.5	11.0	242	114.1	190	3200	72320
PU 8R	600	280	7.5	6.9	103	48.7	81	775	10830
PU 9R	600	360	7.0	6.4	105	49.5	82	940	16930
PU 10R	600	360	8.0	7.0	114	53.8	90	1055	18960
PU 11R	600	360	9.0	7.6	123	58.1	97	1165	20960
PU 13R	675	400	10.0	7.4	124	65.6	97	1285	25690
PU 14R	675	400	11.0	8.0	133	70.5	104	1400	28000
PU 15R	675	400	12.0	8.6	142	75.4	112	1515	30290

AU/PU/PU-R/GU

AU/PU/PU-R/GU Steel Sheet Piles



SECTION	Width (b) mm	Height (h) mm	THICKNESS		Cross Sectional Area cm ² /m	WEIGHT		Section Modulus cm ³ /m	Moment of Inertia cm ⁴ /m
			Flange (s) mm	Web (t) mm		Pile kg/m	Wall kg/m ²		
PU 8R	600	280	7.5	6.9	103	48.7	81	775	10830
PU 9R	600	360	7.0	6.4	105	49.5	82	940	16930
PU 10R	600	360	8.0	7.0	114	53.8	90	1055	18960
PU 11R	600	360	9.0	7.6	123	58.1	97	1165	20960
PU 13R	675	400	10.0	7.4	124	65.6	97	1285	25690
PU 14R	675	400	11.0	8.0	133	70.5	104	1400	28000
PU 15R	675	400	12.0	8.6	142	75.4	112	1515	30290
GU 6N	600	309	6.0	6.0	89	41.9	70	625	9670
GU 7N	600	310	6.4	6.5	94	44.1	74	675	10450
GU 7S	600	311	6.9	7.2	100	46.3	77	740	11540
GU 8N	600	312	7.1	7.5	103	48.5	81	770	12010
GU 12-500	500	340	9.0	8.5	144	56.6	113	1155	19640
GU 13-500	500	340	10.0	9.0	155	60.8	122	1260	21390
GU 15-500	500	340	12.0	10.0	177	69.3	139	1460	24810
GU 16-400	400	290	12.7	9.4	197	62.0	155	1560	22580
GU 18-400	400	292	15.0	9.7	221	69.3	173	1785	26090

Available Steel Grades US Specifications	
ASTM	Elastic Limit (MPa)
S 240 GP	240
S 270 GP	270
S 320 GP	320
S 355 GP	355
S 390 GP*	390
S 430 GP*	430

*Contact us to request S 390 GP and S 430 GP grades.

Connectors

